

# People

## FACULTY BY DEPARTMENT

	TOTAL	FACULTY (FTE)		
		TOTAL	PERCENTAGE OF WOMEN	PERCENTAGE OF FOREIGNERS
<b>UNIVERSITY</b>	<b>2016</b>	<b>2017</b>		
Department of Biology	32,8	33,8	43%	
Department of Chemistry	45,3	44,3	53%	
Department of Civil Engineering	15,15	15,35	21%	
Department of Communication and Art	73,5	74,4	31%	4%
Department of Economics, Management and Industrial Engineering and Tourism	54	52,2	57%	4%
Department of Education and Psychology	38,4	37,8	72%	3%
Department of Electronics, Telecommunications and Informatics	78	76	8%	
Department of Environment and Planning	17	17	59%	
Department of Geosciences	13,3	13,3	38%	
Department of Languages and Cultures	43,3	42,6	51%	21%
Department of Materials Engineering and Ceramics	16	15	47%	
Department of Mathematics	56,6	56,6	45%	9%
Department of Mechanical Engineering	24,9	26,3	11%	
Department of Medical Sciences	19,8	19,8	66%	12%
Department of Physics	44,3	44,3	18%	7%
Department of Social Sciences, Policy and Planning	23,3	21,3	31%	
<b>POLYTECHNIC SCHOOLS</b>				
Águeda School of Technology and Management	54,7	55	44%	1%
School of Accounting and Administration of Aveiro	68,4	64,7	51%	
School of Design, Management and Production Technologies of Aveiro North	20,95	25,9	29%	2%
School of Health of the University of Aveiro	39,6	43,1	65%	
<b>TOTAL</b>	<b>779,3</b>	<b>778,75</b>	<b>41%</b>	<b>3%</b>

## RESEARCHERS BY DEPARTMENT

DEPARTMENT	TOTAL	RESEARCHERS (FTE)		
		TOTAL	PERCENTAGE OF WOMEN	PERCENTAGE OF FOREIGNERS
<b>UNIVERSITY</b>	<b>2016</b>	<b>2017</b>		
Department of Biology	82	90	68%	18%
Department of Chemistry	117	130,5	64%	22%
Department of Civil Engineering	3	3	67%	
Department of Communication and Art	6	8	50%	25%
Department of Economics, Management and Industrial Engineering and Tourism	3	3	67%	
Department of Education and Psychology	16	19	95%	
Department of Electronics, Telecommunications and Informatics	17	24	33%	25%
Department of Environment and Planning	22,6	33	58%	27%
Department of Geosciences	11	9	67%	11%
Department of Languages and Cultures	1			
Department of Medical Sciences	7	11	73%	
Department of Materials Engineering and Ceramics	36,3	37,3	32%	33%
Department of Mathematics	9	7	43%	43%
Department of Mechanical Engineering	25,4	32,4	46%	66%
Department of Physics	55	75	27%	45%
Department of Social Sciences, Policy and Planning	7	19	63%	26%
School of Design, Management and Production Technologies of Aveiro North	1	2	50%	50%
School of Health of The University of Aveiro	1			
<b>TOTAL</b>	<b>420,3</b>	<b>503,2</b>	<b>54%</b>	<b>28%</b>

## STAFF BY CATEGORY

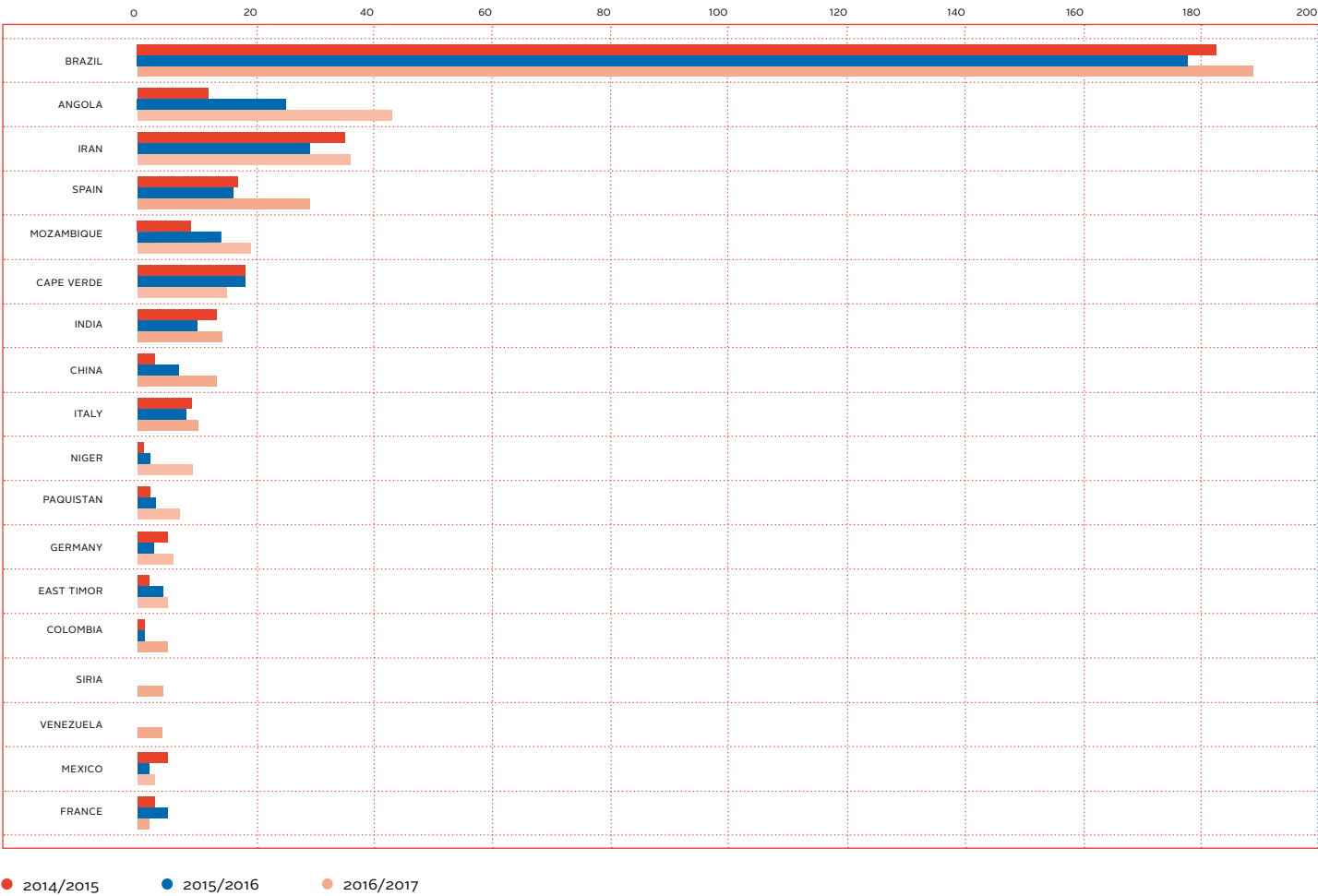
CATEGORY	FACULTY (FTE)			
	2016	2017		
UNIVERSITY	TOTAL	TOTAL	PERCENTAGE OF WOMEN	PERCENTAGE OF FOREIGNERS
Full professors	56,9	54,5	12%	4%
Associated professors	122,3	121	39%	2%
Assistant professors	377,2	378,4	44%	4%
Lecturers	22,95	19,55	56%	
Other teaching staff	16,3	16,6	76%	42%
Researchers	92,3	120,2	38%	31%
Post-doctoral fellows	328	383	60%	27%
<b>POLYTECHNIC SCHOOLS</b>				
Coordinator professors	13,9	12,9	31%	
Adjunt professors	117,6	125,4	51%	1%
Lecturers	52,15	50,4	51%	
<b>TOTAL</b>	<b>1199,6</b>	<b>1281,95</b>	<b>47%</b>	<b>13%</b>

## PhD STUDENTS BY DEPARTMENT

UNIVERSITY	TOTAL	PhD STUDENTS			
		TOTAL	PERCENTAGE OF WOMEN	PERCENTAGE OF FOREIGNERS	PERCENTAGE OF NEW STUDENTS
DEPARTMENT	2015/2016	2016/2017			
Department of Biology	166	173	67%	27%	20%
Department of Chemistry	114	122	73%	17%	21%
Department of Civil Engineering	51	50	18%	42%	20%
Department of Communication and Art	214	242	49%	47%	33%
Department of Economics, Management and Industrial Engineering and Tourism	173	178	47%	38%	26%
Department of Education and Psychology	219	244	73%	34%	30%
Department of Electronics, Telecommunications and Informatics	111	100	18%	36%	27%
Department of Environment and Planning	74	83	47%	43%	34%
Department of Geosciences	11	8	75%	50%	0%
Department of Languages and Cultures	46	50	72%	38%	26%
Department of Materials Engineering and Ceramics	74	75	39%	39%	27%
Department of Mathematics	26	22	68%	14%	14%
Department of Mechanical Engineering	78	65	46%	25%	14%
Department of Medical Sciences	28	48	73%	4%	21%
Department of Physics	83	91	34%	19%	36%
Department of Social Sciences, Policy and Planning	41	62	44%	39%	50%
<b>TOTAL*</b>	<b>1316</b>	<b>1377</b>	<b>54%</b>	<b>33%</b>	<b>28%</b>

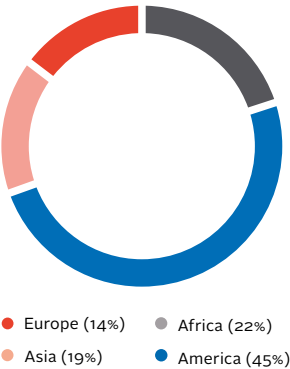
\* The students of joint doctoral studies are considered in each participating department. Therefore, the sum of the students by department is superior to the total.

### FOREIGN PhD STUDENTS BY NATIONALITY

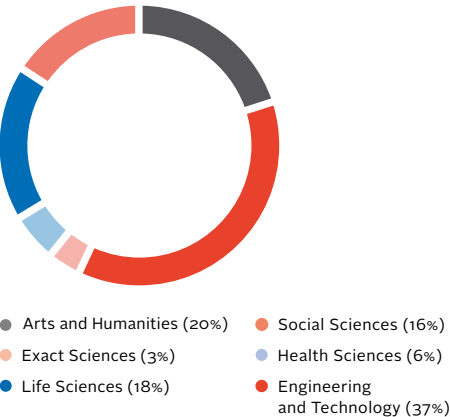


## MSc and PhD theses

FOREIGN PhD STUDENTS BY CONTINENT



MSc THESES IN 2017 PER AREA



PhD THESES IN 2017 PER AREA

